

Slow Speed Shaft Direction	
Horizontal, slow speed shaft level	H
Vertical, slow speed shaft down	V
Vertical, slow speed shaft up	W
Universal mounting	N

Mounting style	
Foot	H
V flange	V
Flange	F

Type of Input	
Gearmotor	M
With adaptor	JM

Special Specifications	
Standard specification	blank
Special specification	S

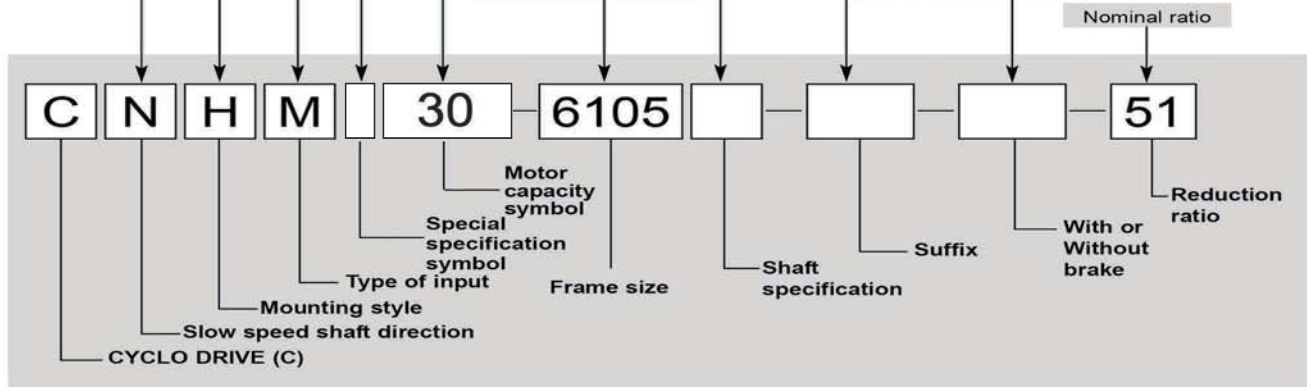
		Motor Capacity Symbol						
4P	Capacity symbol	01	02	03	05	08	1	
	kW (HP)	0.1 (1/8)	0.2 (1/4)	0.25 (1/3)	0.4 (1/2)	0.55 (3/4)	0.75 (1)	
	Capacity symbol	1H	2	3	4	5	8	
	kW (HP)	1.1 (1.5)	1.5 (2)	2.2 (3)	3.0 (4)	3.7 (5)	5.5 (7.5)	
	Capacity symbol	10	15	20	25	30	40	
	kW (HP)	7.5 (10)	11 (15)	15 (20)	18.5 (25)	22 (30)	30 (40)	
6P	Capacity symbol	50	60	75	100			
	kW (HP)	37 (50)	45 (60)	55 (75)	75 (100)			
	Capacity symbol	016	026	036	056	086	16	
	kW (HP)	0.1 (1/8)	0.2 (1/4)	0.25 (1/3)	0.4 (1/2)	0.55 (3/4)	0.75 (1)	
	Capacity symbol	1H6	26	36	46	56	86	
	kW (HP)	1.1 (1.5)	1.5 (2)	2.2 (3)	3.0 (4)	3.7 (5)	5.5 (7.5)	
6P	Capacity symbol	106	156	206	256	306	406	
	kW (HP)	7.5 (10)	11 (15)	15 (20)	18.5 (25)	22 (30)	30 (40)	
	Capacity symbol	506	606	756	1006	1256	1506	
	kW (HP)	37 (50)	45 (60)	55 (75)	75 (100)	90 (125)	110 (150)	
	Capacity symbol	1756						
	kW (HP)	132 (175)						

Shaft specification	
Metric JIS (Standard)	-
Inch size	Y
Metric DIN	G

Suffix		
Standard	-	Low Backlash
Light Heavy Radial	R1	With AF (inverter) motor
High Cap. Brg. Ductile Casing	R2	Servo Motor
Baseplate	BP	DC Motor
HH Type Ceiling	H1	High Efficiency Motor
Modification Left Wall	H2	Torque Limiter
Modification Right Wall	H3	

With or Without Brake	
Without brake	-
With brake	B

Frame size
(Refer to Selection
Tables starting from
page B-13.)

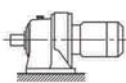


Product and Nomenclature Symbol Examples (Gearmotor)

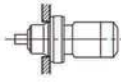
Standard and various application products of CYCLO GEARMOTOR are classified by their nomenclature symbol as below. Refer to specific catalogs or consult us for details on our application products.

CYCLO® GEARMOTORS

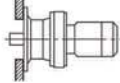
CHHM
(CNHM)



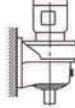
CHFM
(CNFM)



CHVM
(CNVM)



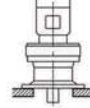
CVHM
(CNHM)



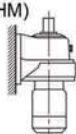
CVFM
(CNFM)



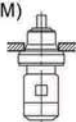
CVVM
(CNVM)



CWHM
(CNHM)



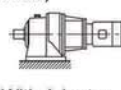
CWFM
(CNFM)



CWVM
(CNVM)

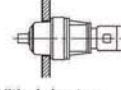


CHHJM
(CNHJM)



With Adaptor

CHFJM
(CNFJM)



With Adaptor

CVVJM
(CNVJM)

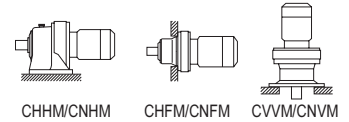


With Adaptor

Selection Tables Gearmotors #CNHM30, #CHHM30, #CNVM30, #CVVM30

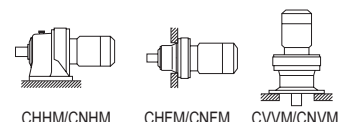
Selection Tables
18.5 kW, 22 kW

18.5 kW	Hz		50Hz		60Hz	
	P		4	6	4	6
	n ₁	r/min	1450	980	1750	1165



50Hz						60Hz						Nomenclature			Page of Dimension Sheet					
Output Speed n ₂	Output Torque Tout		Allowable Radial Load Pro		SF	Output Speed n ₂	Output Torque Tout		Allowable Radial Load Pro		SF	Input Capacity Symbol	Frame Size	Reduction Ratio	CNHM CHHM	CNFM CHFM	CNVM CVVM			
r/min	N·m	kgf·m	N	kgf		r/min	N·m	kgf·m	N	kgf										
7.44	21400	2180	159000	16200	0.92	8.97	17700	1810	151000	15400	1.11	25 -	6235DA	- 195	B-114	B-131	B-150			
			178000	18100	1.23				169000	17200	1.29				25 -	6245DA	- 195	B-114	B-131	B-150
			178000	18100	1.23				169000	17200	1.48				25 -	6245DB	- 195	B-114	B-131	B-150
			218000	22200	1.46				207000	21100	1.72				25 -	6255DA	- 195	B-115	B-132	B-151
			218000	22200	1.46				207000	21100	1.76				25 -	6255DB	- 195	B-115	B-132	B-151
6.28	25300	2580	267000	27200	2.05	7.58	21000	2140	252000	25700	2.47	25 -	6265DA	- 195	B-115	B-132	B-151			
			189000	19300	*1				189000	19300	*1				25 -	6235DA	- 231	B-114	B-131	B-150
			189000	19300	1.02				180000	18300	1.23				25 -	6245DA	- 231	B-114	B-131	B-150
			232000	23600	1.22				219000	22400	1.48				25 -	6255DA	- 231	B-115	B-132	B-151
			276000	28100	1.82				269000	27400	2.19				25 -	6265DA	- 231	B-115	B-132	B-151
5.31	29900	3050	198000	20200	0.86	6.41	24800	2530	188000	19200	1.04	25 -	6245DA	- 273	B-114	B-131	B-150			
			243000	24800	1.04				230000	23500	1.25				25 -	6255DA	- 273	B-115	B-132	B-151
			276000	28100	1.54				276000	28100	1.85				25 -	6265DA	- 273	B-115	B-132	B-151
			258000	26300	*1				258000	26300	*1				25 -	6245DA	- 319	B-114	B-131	B-150
4.55	35000	3570	255000	26000	0.93	5.49	29000	2950	242000	24600	1.12	25 -	6255DA	- 319	B-115	B-132	B-151			
			276000	28100	1.31				276000	28100	1.59				25 -	6265DA	- 319	B-115	B-132	B-151
			248000	25300	1.95				248000	25300	2.35				25 -	6275DA	- 319	B-115	-	B-151
			325000	33100	*1				325000	33100	*1				25 -	6255DA	- 377	B-115	B-132	B-151
3.85	41300	4210	276000	28100	1.11	4.64	34300	3490	276000	28100	1.34	25 -	6265DA	- 377	B-115	B-132	B-151			
			248000	25300	1.65				248000	25300	1.99				25 -	6275DA	- 377	B-115	-	B-151
			276000	28100	0.89				276000	28100	1.07				25 -	6265DA	- 473	B-115	B-132	B-151
3.07	51900	5290	248000	25300	1.31	3.70	43000	4380	248000	25300	1.59	25 -	6275DA	- 473	B-115	-	B-151			
			46000	4690	276000				28100	*1	46000				4690	276000	28100	*1	25 -	6265DA
2.59	61300	6250	248000	25300	1.11	3.13	50800	5180	248000	25300	1.34	25 -	6275DA	- 559	B-115	-	B-151			
			2.23	71200	7250				248000	25300	0.96				2.70	59000	6010	248000	25300	1.16
1.98	80200	8170	248000	25300	0.85	2.39	66400	6770	248000	25300	1.03	25 -	6275DA	- 731	B-115	-	B-151			
1.72	68200	6950	248000	25300	*1	2.08	68200	6950	248000	25300	*1	25 -	6275DA	- 841	B-115	-	B-151			

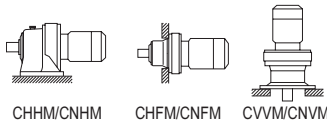
22 kW	Hz		50Hz		60Hz	
	P		4	6	4	6
	n ₁	r/min	1450	980	1750	1165



50Hz						60Hz						Nomenclature			Page of Dimension Sheet					
Output Speed n ₂	Output Torque Tout		Alloeeable Radial Load Pro		SF	Output Speed n ₂	Output Torque Tout		Alloeeable Radial Load Pro		SF	Input Capacity Symbol	Frame Size	Reduction Ratio	CNHM CHHM	CNFM CHFM	CNVM CVVM			
r/min	N·m	kgf·m	N	kgf		r/min	N·m	kgf·m	N	kgf										
242	826	84.2	10100	1020	1.10	292	684	69.8	9510	969	1.10	30 -	6165	- 6	B-103	B-119	B-138			
			11500	1170	1.25				10800	1100	1.25				30 -	6170	- 6	B-103	B-119	B-138
			11500	1170	1.37				10800	1100	1.37				30 -	6175	- 6	B-103	B-119	B-138
181	1100	112	11200	1140	1.10	219	912	93.0	10600	1080	1.10	30 -	6165	- 8	B-103	B-119	B-138			
			12600	1290	1.25				11900	1220	1.25				30 -	6170	- 8	B-103	B-119	B-138
			12600	1290	1.37				11900	1220	1.37				30 -	6175	- 8	B-103	B-119	B-138

1. Combinations in **bold** are the recommended models for operations for 10 hours/day with uniform load (service factor is about 1.0 for motor rating at 50Hz).
2. Motor slippage may affect n₁ and n₂. Refer to technical data for details.
3. CNHM, CHHM, CNFM, CHFM, CNVM, and CVVM indicate types. Refer to page B-10 for details.
4. Lubrication method is different for each model. Refer to "Lubrication" section in page F-4~F-5 for details.
5. "6" at the end of "input capacity symbol" indicates models with 6P motor. Other models come with 4P motor.

Selection Tables Gearmotors #CNHM30, #CHHM30, #CNVM30, #CVVM30



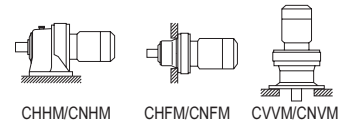
22 kW	Hz		50Hz		60Hz	
	P		4	6	4	6
	n ₁	r/min	1450	980	1750	1165

50Hz					60Hz					Nomenclature			Page of Dimension Sheet										
Output Speed n ₂ r/min	Output Torque Tout N·m kgf·m		Allowable Radial Load Pro N kgf		SF	Output Speed n ₂ r/min	Output Torque Tout N·m kgf·m		Allowable Radial Load Pro N kgf		SF	Input Capacity Symbol	Frame Size	Reduction Ratio	CNHM CHHM	CNFM CHFM	CNVM CVVM						
132	1510	154	12600	1280	1.10	159	1250	128	11900	1220	1.10	30 -	6165	- 11	B-103	B-119	B-138						
			14500	1470	1.25				13700	1390	1.25	30 -	6170	- 11	B-103	B-119	B-138						
			14500	1470	1.37				13700	1390	1.37	30 -	6175	- 11	B-103	B-119	B-138						
			19500	1980	1.60				18300	1870	1.60	30 -	6180	- 11	B-104	B-120	B-139						
			19500	1980	1.77				18300	1870	1.77	30 -	6185	- 11	B-104	B-120	B-139						
			27300	2780	1.86				25700	2620	1.86	30 -	6190	- 11	B-104	B-120	B-139						
			27300	2780	2.19				25700	2620	2.19	30 -	6195	- 11	B-104	B-120	B-139						
52300	5330	2.71	49500	5040	2.71	30 -	6205	- 11	B-105	B-121	B-140												
112	1790	182	13100	1330	1.03	135	1480	151	12400	1270	1.03	30 -	6165	- 13	B-103	B-119	B-138						
			15000	1530	1.24				14200	1450	1.24	30 -	6170	- 13	B-103	B-119	B-138						
			15000	1530	1.37				14200	1450	1.37	30 -	6175	- 13	B-103	B-119	B-138						
			20200	2060	1.60				19100	1940	1.60	30 -	6180	- 13	B-104	B-120	B-139						
			20200	2060	1.77				19100	1940	1.77	30 -	6185	- 13	B-104	B-120	B-139						
			28400	2890	1.86				26700	2730	1.86	30 -	6190	- 13	B-104	B-120	B-139						
			28400	2890	2.19				26700	2730	2.19	30 -	6195	- 13	B-104	B-120	B-139						
96.7	2060	210	13800	1400	1.02	117	1710	174	13100	1340	1.03	30 -	6165	- 15	B-103	B-119	B-138						
			15600	1590	1.16				14800	1510	1.16	30 -	6170	- 15	B-103	B-119	B-138						
			15600	1590	1.37				14800	1510	1.37	30 -	6175	- 15	B-104	B-120	B-139						
			21300	2170	1.47				20100	2050	1.47	30 -	6180	- 15	B-104	B-120	B-139						
			21300	2170	1.77				20100	2050	1.77	30 -	6185	- 15	B-104	B-120	B-139						
			29800	3040	1.86				28100	2860	1.86	30 -	6190	- 15	B-104	B-120	B-139						
			29800	3040	2.19				28100	2860	2.19	30 -	6195	- 15	B-104	B-120	B-139						
56200	5730	2.71	53200	5420	2.71	30 -	6205	- 15	B-105	B-121	B-140												
85.3	2340	239	14100	1440	0.86	103	1940	198	13400	1370	0.86	30 -	6165	- 17	B-103	B-119	B-138						
			16200	1650	1.10				15400	1570	1.10	30 -	6175	- 17	B-103	B-119	B-138						
			22400	2280	1.39				21200	2160	1.39	30 -	6180	- 17	B-104	B-120	B-139						
			22400	2280	1.74				21200	2160	1.77	30 -	6185	- 17	B-104	B-120	B-139						
			31400	3200	1.86				29600	3010	1.86	30 -	6190	- 17	B-104	B-120	B-139						
			31400	3200	2.19				29600	3010	2.19	30 -	6195	- 17	B-104	B-120	B-139						
			69.0	2890	295				17500	1780	1.07	83.3	2400	244	16600	1690	1.10	30 -	6175	- 21	B-103	B-119	B-138
24000	2450	1.36				22700	2310	1.36	30 -	6180	- 21				B-104	B-120	B-139						
24000	2450	1.73				22700	2310	1.77	30 -	6185	- 21				B-104	B-120	B-139						
33700	3440	1.86				31800	3240	1.86	30 -	6190	- 21				B-104	B-120	B-139						
33700	3440	2.19				31800	3240	2.19	30 -	6195	- 21				B-104	B-120	B-139						
62900	6410	2.69				59500	6070	2.69	30 -	6205	- 21				B-105	B-121	B-140						
58.0	3440	351				17900	1830	0.89	70.0	2850	291				17000	1740	0.89	30 -	6175	- 25	B-103	B-119	B-138
			24900	2530	1.10	23500	2400	1.10				30 -	6180	- 25	B-104	B-120	B-139						
			24900	2530	1.37	23500	2400	1.37				30 -	6185	- 25	B-104	B-120	B-139						
			35300	3590	1.60	33200	3390	1.60				30 -	6190	- 25	B-104	B-120	B-139						
			35300	3590	1.84	33200	3390	1.84				30 -	6195	- 25	B-104	B-120	B-139						
			50.0	3990	407	25900	2640	1.10				60.3	3310	337	24500	2500	1.10	30 -	6185	- 29	B-104	B-120	B-139
						37000	3770	1.40							34900	3560	1.40	30 -	6190	- 29	B-104	B-120	B-139
37000	3770	1.72				34900	3560	1.72	30 -	6195	- 29				B-104	B-120	B-139						
68500	6990	2.08				64900	6610	2.08	30 -	6205	- 29				B-105	B-121	B-140						
70000	7130	2.66				66200	6750	2.66	30 -	6215	- 29				B-105	B-121	B-140						
41.4	4820	491				27500	2810	1.03	50.0	3990	407				26000	2650	1.03	30 -	6185	- 35	B-104	B-120	B-139
						39000	3970	1.10							36700	3750	1.10	30 -	6190	- 35	B-104	B-120	B-139
			39000	3970	1.37	36700	3750	1.37				30 -	6195	- 35	B-104	B-120	B-139						
			33.7	5920	603	29100	2970	0.85				40.7	4900	500	27600	2820	0.85	30 -	6185	- 43	B-104	B-120	B-139
						41800	4260	0.95							39400	4020	0.95	30 -	6190	- 43	B-104	B-120	B-139
						41800	4260	1.23							39400	4020	1.37	30 -	6195	- 43	B-104	B-120	B-139
						77100	7860	1.45							73000	7440	1.45	30 -	6205	- 43	B-105	B-121	B-140
78700	8020	2.05				74600	7600	2.05	30 -	6215	- 43				B-105	B-121	B-140						
83400	8510	2.57				79000	8050	2.57	30 -	6225	- 43				B-106	B-122	B-141						
28.4	7020	716				43400	4420	0.95	34.3	5820	593				41000	4180	0.95	30 -	6195	- 51	B-104	B-120	B-139

- "*2" indicate models manufactured with reducer and motor separately mounted on a common baseplate (horizontal shaft direction) or on an adaptor (vertical shaft direction). Consult us for details, including dimensions.
- Allowable radial load (Pro) is the value at the midpoint of the slow speed shaft.
- "*3" indicate models with reduction ratios equal to nominal ratio. Refer to Table A-3 "6000SK Series (Actual Reduction Ratio)" on page A-4 for actual reduction ratio. Indicated reduction ratio is the same as actual reduction ratio for other models.
- Maintain torque load during operation within "Output torque" in the table for models with "*" in the SF column. They cannot be operated with 100% motor rating.

Selection Tables Gearmotors #CNHM30, #CHHM30, #CNVM30, #CVVM30

22 kW	Hz		50Hz		60Hz	
	P		4	6	4	6
	n ₁	r/min	1450	980	1750	1165



50Hz						60Hz						Nomenclature			Page of Dimension Sheet				
Output Speed n ₂ r/min	Output Torque Tout N·m	kgf·m	Allowable Radial Load Pro N	kgf	SF	Output Speed n ₂ r/min	Output Torque Tout N·m	kgf·m	Allowable Radial Load Pro N	kgf	SF	Input Capacity Symbol	Frame Size	Reduction Ratio	CNHM CHHM	CNFM CHFM	CNVM CVVM		
24.6	8120	828	45300	4620	0.85	29.7	6730	686	42800	4360	0.85	30 -	6195	- 59	B-104	B-120	B-139		
			83600	8520	1.03				79200	8070	1.03	30 -	6205	- 59	B-105	B-121	B-140		
			85300	8690	1.54				80800	8240	1.71	30 -	6215	- 59	B-105	B-121	B-140		
			90500	9220	1.79				85700	8740	2.05	30 -	6225	- 59	B-106	B-122	B-141		
22.8	8760	893	84100	8570	1.06	27.1	7370	751	82100	8370	1.26	306 -	6205	- 43	B-105	B-121	B-140		
			88000	8970	1.45				83800	8540	1.72	306 -	6215	- 43	B-105	B-121	B-140		
			93400	9520	1.83				88900	9060	2.17	306 -	6225	- 43	B-106	B-122	B-141		
16.7	12000	1220	101000	10300	1.21	20.1	9920	1010	95700	9760	1.21	30 -	6225	- 87	B-106	B-122	B-141		
16.6	12000	1220	95200	9710	1.05	19.7	10100	1030	90700	9250	1.25	306 -	6215	- 59	B-105	B-121	B-140		
			101000	10300	1.32				96300	9810	1.51	306 -	6225	- 59	B-106	B-122	B-141		
			141000	14400	2.15				134000	13700	2.55	306 -	6245	- 59	B-107	B-123	B-142		
12.0	15800	1610	114000	104000	10600	*1	14.5	13100	1330	114000	101000	10300	*1	30 -	6215DB	- 121	B-113	B-130	B-149
			112000	11400	0.85	106000				10900	1.03	30 -	6225DB	- 121	B-113	B-130	B-149		
			141000	14400	1.15	134000				13700	1.15	30 -	6235DA	- 121	B-114	B-131	B-150		
			141000	14400	1.19	134000				13700	1.43	30 -	6235DB	- 121	B-114	B-131	B-150		
			157000	16000	1.30	149000				15200	1.57	30 -	6245DB	- 121	B-114	B-131	B-150		
			193000	19700	1.45	183000				18700	1.45	30 -	6255DA	- 121	B-115	B-132	B-151		
			193000	19700	1.74	183000				18700	2.10	30 -	6255DB	- 121	B-115	B-132	B-151		
			237000	24100	1.99	224000				22800	2.31	30 -	6265DA	- 121	B-115	B-132	B-151		
11.3	17700	1810	158000	16100	1.28	13.4	14900	1520	150000	15300	1.46	306 -	6245	- 87	B-107	B-123	B-142		
			195000	19800	1.75				185000	18900	1.95	306 -	6255	- 87	B-107	B-123	B-142		
			237000	24200	2.43				226000	23000	2.43	306 -	6265	- 87	B-107	B-123	B-142		
8.79	21500	2190	151000	15400	0.91	10.6	17800	1820	143000	14600	1.10	30 -	6235DA	- 165	B-114	B-131	B-150		
			169000	17200	1.15				160000	16300	1.15	30 -	6245DA	- 165	B-114	B-131	B-150		
			169000	17200	1.22				160000	16300	1.47	30 -	6245DB	- 165	B-114	B-131	B-150		
			207000	21100	1.45				196000	20000	1.45	30 -	6255DA	- 165	B-115	B-132	B-151		
			207000	21100	1.45				196000	20000	1.75	30 -	6255DB	- 165	B-115	B-132	B-151		
253000	25800	2.03	240000	24400	2.31	30 -	6265DA	- 165	B-115	B-132	B-151								
7.44	25400	2590	196000	16200	*1	8.97	21100	2150	150000	15300	*1	30 -	6235DA	- 195	B-114	B-131	B-150		
			177000	18000	1.03				168000	17100	1.08	30 -	6245DA	- 195	B-114	B-131	B-150		
			177000	18000	1.03				168000	17100	1.25	30 -	6245DB	- 195	B-114	B-131	B-150		
			218000	22200	1.23				206000	21000	1.45	30 -	6255DA	- 195	B-115	B-132	B-151		
			218000	22200	1.23				206000	21000	1.48	30 -	6255DB	- 195	B-115	B-132	B-151		
266000	27100	1.72	252000	25700	2.08	30 -	6265DA	- 195	B-115	B-132	B-151								
6.28	30100	3070	188000	19200	0.86	7.58	25000	2540	179000	18200	1.03	30 -	6245DA	- 231	B-114	B-131	B-150		
			231000	23500	1.03				219000	22300	1.24	30 -	6255DA	- 231	B-115	B-132	B-151		
			276000	28100	1.53				268000	27300	1.84	30 -	6265DA	- 231	B-115	B-132	B-151		
5.31	35600	3630	258000	26300	*1	6.41	29500	3010	188000	19200	*1	30 -	6245DA	- 273	B-114	B-131	B-150		
			242000	24700	0.87				229000	23400	1.05	30 -	6255DA	- 273	B-115	B-132	B-151		
			276000	28100	1.29				276000	28100	1.56	30 -	6265DA	- 273	B-115	B-132	B-151		
4.55	41600	4240	325000	33100	*1	5.49	34500	3510	241000	24600	*1	30 -	6255DA	- 319	B-115	B-132	B-151		
			276000	28100	1.11				276000	28100	1.33	30 -	6265DA	- 319	B-115	B-132	B-151		
			248000	25300	1.64				248000	25300	1.98	30 -	6275DA	- 319	B-115	-	B-151		
3.85	49200	5010	276000	28100	0.94	4.64	40700	4150	276000	28100	1.13	30 -	6265DA	- 377	B-115	B-132	B-151		
			248000	25300	1.39				248000	25300	1.67	30 -	6275DA	- 377	B-115	-	B-151		
3.07	61700	6290	460000	46900	*1	3.70	51100	5210	276000	28100	*1	30 -	6265DA	- 473	B-115	B-132	B-151		
			248000	25300	1.11				248000	25300	1.33	30 -	6275DA	- 473	B-115	-	B-151		
2.59	72900	7430	248000	25300	0.94	3.13	60400	6160	248000	25300	1.13	30 -	6275DA	- 559	B-115	-	B-151		
2.23	84600	8630	682000	69500	*1	2.70	70100	7150	248000	25300	*1	30 -	6275DA	- 649	B-115	-	B-151		
			248000	25300	0.81				248000	25300	0.97	30 -	6275DA	- 649	B-115	-	B-151		
1.98	68200	6950	248000	25300	*1	2.39	68200	6950	248000	25300	*1	30 -	6275DA	- 731	B-115	-	B-151		

1. Combinations in **bold** are the recommended models for operations for 10 hours/day with uniform load (service factor is about 1.0 for motor rating at 50Hz).
2. Motor slippage may affect n₁ and n₂. Refer to technical data for details.
3. CNHM, CHHM, CNFM, CHFM, CNVM, and CVVM indicate types. Refer to page B-10 for details.
4. Lubrication method is different for each model. Refer to "Lubrication" section in page F-4~F-5 for details.
5. "6" at the end of "input capacity symbol" indicates models with 6P motor. Other models come with 4P motor.